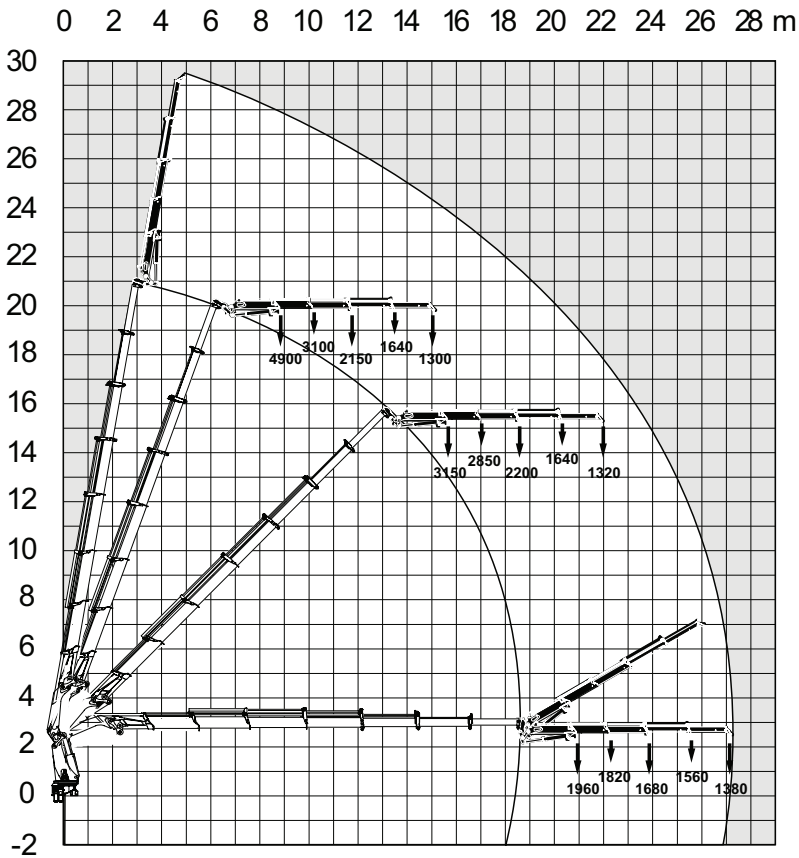


Load Diagram



Capacity and performance

Lifting capacity with ADC	696	(kNm)
Standard lifting capacity at standard outreach with ADC	3.8 (m) - 18000 (kg)	
	4.4 (m) - 16100 (kg)	
	6.0 (m) - 11500 (kg)	
	7.8 (m) - 8500 (kg)	
	9.7 (m) - 6600 (kg)	
	11.7 (m) - 5300 (kg)	
	13.7 (m) - 4500 (kg)	
	15.8 (m) - 3800 (kg)	
	17.9 (m) - 3300 (kg)	
Hydraulic boom extension	13.6	(m)
Lifting height above installation level hydraulic	29.6	(m)
Slewing torque	69	(kNm)
V80 Slewing speed	10	(°/s)
Slewing angle	Continuous	(°)
Lifting speed	0.9	(m/s)
Jib hydraulic outreach	26.9	(m)
Jib standard lifting capacity at standard extension	20.7 (m) - 1960 (kg)	
	22.0 (m) - 1820 (kg)	
	23.5 (m) - 1680 (kg)	
	25.2 (m) - 1560 (kg)	
	26.8 (m) - 1380 (kg)	

Functional demands

Recommended oilflow low	90	(l/min) V91M Fixed
Recommended oilflow high	140	(l/min) V91M Variable
Working pressure	32	(MPa)
Max slope viable at full capacity	4	(°)
Oil in tank	200	(l)
Tank capacity	260	(l)

Weights and measurements

Height in folded position	2909	(mm)
Width in folded position	2500	(mm)
Installation space needed	1734	(mm)
Weight of crane with Jib	8195	(kg)

Side View Unfolded Close in Area

